



International Exchange Programs  
Admission\_IMBA\_2024 Spring

## My Experience at Emlyon Business School in Lyon

### Introduction

Studying at Emlyon Business School in Lyon was a decision driven by the institution's stellar reputation and accreditation. Emlyon is one of the oldest and most prestigious business schools in France, known for its focus on entrepreneurship and innovation. It is among the elite 1% of business schools worldwide that hold the "Triple Crown" accreditation from AACSB, EQUIS, and AMBA, underscoring its commitment to high-quality education and continuous improvement.

I chose Emlyon not only for its academic excellence but also for its strategic location. France is renowned for its educational institutions, and Lyon, being a major city close to Paris, offered the perfect balance. Unlike Paris, Lyon is less crowded, making it easier to travel within Europe. Having visited France several times before, I didn't need much time to adapt, making the transition smoother during my four-month stay.



## Campus Life and Living in Lyon

The Emlyon campus is currently situated in Écully, a quiet town about 30 minutes by bus from Lyon's city center. However, the campus is set to move into Lyon next semester, making it even more accessible. Living in Écully was convenient as I was just a 15-minute walk from the school. This residential area, though not bustling with activity, provided a peaceful environment for studying. The nearest supermarket was a 15-minute walk away, but I adapted quickly, planning my purchases in advance and enjoying cooking my meals at home.



## Accommodation Challenges

Finding accommodation in Lyon posed a challenge due to the high administrative fees charged by agencies and the competitive housing market. Eventually, I opted for an Airbnb near the school, sharing an apartment with the owner and another tenant. Living close to the school was convenient, though many of my exchange friends preferred the city center for its vibrant lifestyle and proximity to shops, restaurants, and bars.



Écully Town, on the way to school

## **Transportation**

Transportation in Lyon was efficient, with buses, trams, and the TGV train connecting various parts of the city and beyond. Lyon's public transportation system is well-organized, with student discounts available for those under 26, making it affordable to navigate the city. I often used the bus for my daily commute and inter-city travel, finding it both convenient and cost-effective.



**Bus in Lyon**

## **Academic Experience**

The initial orientation at Emlyon revealed a compact campus with two main buildings, a library, a creative hub, and a gymnasium. Despite its size, the campus was well-equipped, with facilities that supported both academic and extracurricular activities. The creative hub, in particular, was a standout feature, offering tools and resources for entrepreneurial students.

## **Classroom Environment**

The class experience in Lyon was quite different from what I was accustomed to in Asia. Classes were small, fostering a more intimate and engaging learning environment. The emphasis on attendance was strict, allowing only two absences per course without a doctor's note. This policy ensured that students remained engaged and committed. The academic system was practical and integrated, with all necessary information, including class materials, quizzes, and scores, available on a single platform.



During my exchange, I took various courses split into two cycles. In the first cycle, I enrolled in Customer Experience and Service Quality, Management Cost and Accounting, Organising Social Innovation, and French classes. The second cycle included Digital Marketing and additional French classes. The European Credit Transfer and Accumulation System (ECTS) was used, with each course worth 5 ECTS, equivalent to approximately 2.5 credits in Taiwan.



## **Social Life and Extracurricular Activities**

Interacting with European students brought a new dimension to my social life. They enjoyed visiting museums, taking walks, and traveling to nearby cities. Winter sports like skiing were popular, although I didn't participate due to my lack of experience. Summer activities often involved picnics, beach trips, and soaking up the sun, a lifestyle I found refreshing.

## **Food and Culture**

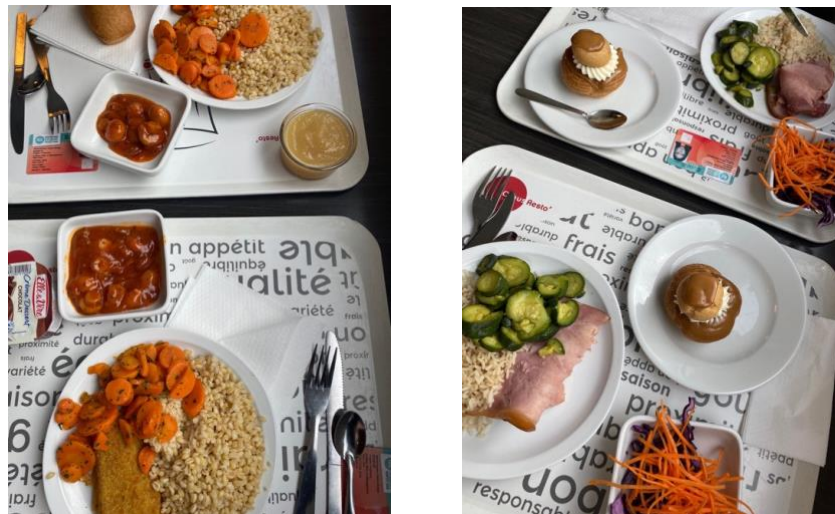
Lyon is celebrated for its culinary excellence, being the birthplace of Michelin-starred chef Paul Bocuse. The city's traditional dish, Bouchon, and desserts like Praline, though not entirely to my taste, added to the cultural experience. Dining out in Lyon can be expensive, so like many of my



European friends, I often cooked at home. The availability of Asian ingredients in local supermarkets made it easier to prepare familiar dishes.

Living in Écully meant fewer dining options nearby, but the second-largest Carrefour was accessible by bus, providing everything I needed. The city center offered a plethora of supermarkets and restaurants, catering to diverse tastes and budgets.

One significant advantage for students is the government-supported food options available at Le Paiment Sur Le Campus, located in the neighboring school. These establishments offer nutritious meals at affordable prices, making it easier for students to eat well without breaking the bank. The convenience and quality of these meals were a great benefit during my stay, allowing me to enjoy good food while managing my budget.



**Le Paiment Sur Le Campus**

## **Support from Emlyon International Office**

The International Office at Emlyon provided essential support for visa applications and enrollment procedures. While they offered detailed instructions via email, contacting them directly could be challenging, and responses were sometimes limited. For accommodation and visa-related queries, they recommended partner agencies. However, I found handling these tasks independently to be more effective. Most administrative tasks were straightforward, thanks to the school's efficient online system. Although the staff were generally helpful, there were instances where more detailed guidance would have been appreciated.

## **School Facilities and Activities**

Emlyon Business School offers a wide range of facilities and activities designed to enhance the student experience and support academic and personal growth.

The library is a central resource, providing a vast collection of academic texts, journals, and digital resources essential for research and study. The library also includes numerous meeting rooms equipped with large screens that facilitate group discussions and presentations, allowing students to share and collaborate effectively.

In addition to the library, the school has numerous meeting rooms available across the campus. These rooms are designed with modern technology, including screens and video conferencing capabilities, enabling students to collaborate seamlessly on projects and presentations.

For students interested in technology and data analysis, the computer training rooms are equipped with advanced software and tools. These rooms provide a space for learning and applying skills in various software programs, essential for modern business practices. The finance room is another specialized facility at Emlyon. It is equipped with specialized computers and financial software, allowing students to engage in simulations and real-time market analysis. This hands-on experience is invaluable for those pursuing careers in finance and investment.

The gymnasium and various sports classes promote physical well-being, balancing the rigorous academic environment with opportunities for physical activity and recreation. These facilities are popular among students, offering a variety of sports and fitness classes to suit different interests and fitness levels. On top of these facilities, Emlyon hosts social activities such as the happy hours on the main building's rooftop every Monday evening. These events are organized by students and provide a relaxed environment for socializing and networking.



## **Exploring Lyon and Beyond**

Lyon itself is a city rich with history and culture, from its Roman amphitheater to the stunning Basilica of Notre-Dame de Fourvière. Exploring these sites gave me a greater appreciation for the

city's historical significance and architectural beauty. The vibrant cultural scene in Lyon, with its numerous festivals, theaters, and music venues, added an extra layer of excitement to my stay.

Traveling from Lyon to other European cities was convenient and affordable. The city's central location and excellent transportation network made weekend trips to neighboring countries possible. During my stay, I visited several nearby cities, each offering unique experiences and cultural insights.



## **Challenges and Adaptations**

Living in Écully required careful planning, especially for grocery shopping and other essentials. The lack of nearby facilities meant that I had to plan my trips to the supermarket and manage my time effectively. However, this challenge turned into an opportunity for personal growth, as I learned to cook and became more self-sufficient.

Adapting to the academic rigor and attendance policies at Emlyon was initially challenging, but it ultimately helped me develop better time management and discipline. The small class sizes and interactive teaching methods encouraged active participation and critical thinking, enhancing my learning experience.

## **Reflection and Personal Growth**

My semester at Emlyon Business School in Lyon was a transformative experience that extended beyond academics. The cultural immersion, diverse social interactions, and personal challenges contributed significantly to my growth. Living and studying in a different country broadened my horizons and provided a deeper understanding of various cultures and lifestyles.

The friendships I formed with other international students enriched my experience, offering different perspectives and fostering a sense of global community. These connections made my time in Lyon memorable and highlighted the importance of cultural exchange.

In conclusion, my time at Emlyon Business School in Lyon was an incredibly enriching experience. The combination of high academic standards, a diverse cultural environment, and personal growth opportunities made it a truly transformative journey. The challenges I faced, from adapting to a new academic system to navigating life in a foreign city, ultimately contributed to my development both as a student and as an individual. The friendships and connections I made with fellow students from around the world have left a lasting impact, and I am grateful for the opportunity to have been part of such a dynamic and supportive community. As I look back on my semester in Lyon, I am filled with appreciation for the experiences and memories that will undoubtedly shape my future endeavors.

### City of LYON, France from my viewpoint





