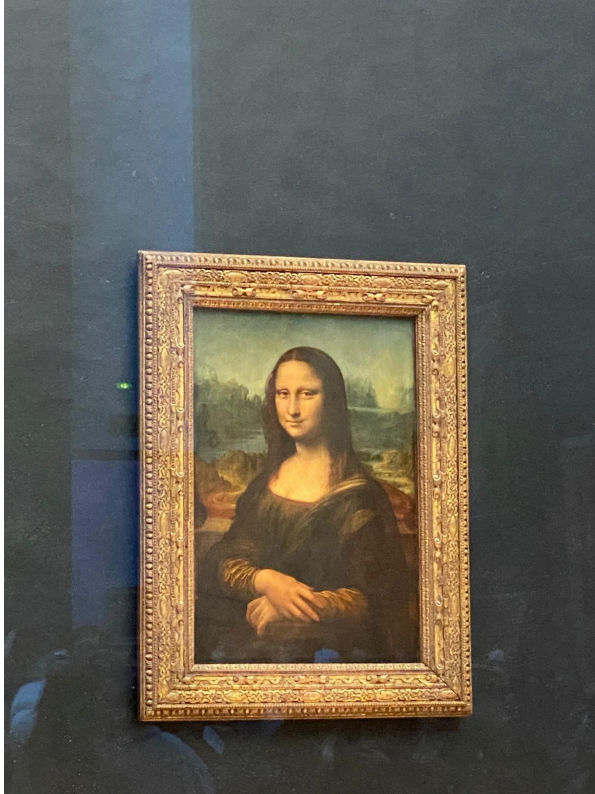


NEWSLETTER 1: PARIS & LILLE

PAT INTUKORN - IMBA SPRING 2024



My exchange journey began in December with a week-long stay in Paris before moving to Lille City, home of EDHEC Business School. Celebrating New Year's Eve in Paris was unforgettable, with fireworks at the Arc de Triomphe on the Champs-Élysées, the city's most traditional celebration. During my time in Paris, I visited the Louvre, the world's most-visited art museum, showcasing works from ancient civilizations to the mid-19th century. Another highlight was the Eiffel Tower, an iconic symbol of Paris renowned for its romantic allure and frequent appearances in films and TV shows.

Despite the allure of Paris, I found myself more at ease in Lille. The city's shopping areas were small and a bit far from the school but still convenient. Carrefour City was perfect for daily grocery needs, while E.Leclerc offered a wide range of products. A short tram ride to Eurotéléport station in Roubaix revealed the Paris Store, the largest Asian supermarket in Lille, ideal for Chinese seasonings, rice, noodles, vegetables, and affordable meat. The people in Lille were welcoming and friendly, making the transition smoother. Exploring local museums and cultural sites further enriched my experience. The warmth of the community and the convenience of daily life in Lille made it an ideal place for my exchange program.
